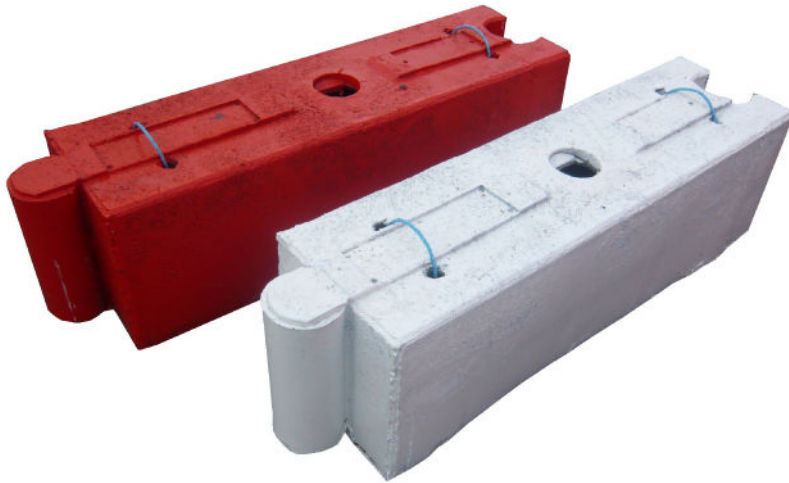


Oaklog Barrier



Product Info:

A self-weighted one-piece barrier with a rigid body, ideal for use as a blockade.

Linked together by a locking system means the Oaklog is stable and sturdy and easily assembled.

The carrying rope handles make it easy to lift and move into position. The Oaklog system can also be used with a post and plank attachment for added height and security.

Each log weighs 40kg and comes in red and white as standard.

Key Features:

- Self Weighted - no ballast needed
- Rope handles for easy lifting and manouverability
- 2 Person deployment
- Full load can cover 600 metres
- Accessories Available:

Post & Plank Reflective Panel

Specifications:

Product	Oaklog
Length	1000mm
Width	300mm
Height	300mm
Weight (E / F)	40 kg
Colour	Red / White

